



- + Standard Bauform – Extra Leistung
Standard shape – extra performance
- + 100.000 h geeignet für Zone 2 Ex
100,000 h suitable for zone 2 hazardous areas
- + Ein- und zweilampig – Ein Gerät
Single- and double lamp drive – one ballast



neu
new

Flach. Stark. Spart.
Flat. Strong. Saves.

Linear VI

Luxtronic[®]

Die Lösung für professionelles Licht mit höchsten Anforderungen auch – und gerade im Ex-Bereich.

The solution for professional lighting with highest requirements especially in hazardous areas, too.

Linear VI

- + **Standard-Bauform 360 x 30 x 21 mm**
14 – 35 W T 5, 18, 36, 58 W T 8
- + **Ein- und zweiflammig in einem Gerät**
– spart Lagerkosten und vereinfacht die Lagerhaltung
- + **Ex-Zulassung mit Konformitätsaussage**
– erleichtert die Leuchtzulassung und gibt Sicherheit
- + **Lebensdauer von 100.000 h bei ta = 60 °C**
Wirtschaftlich: Reduziert die Austauschkosten
- + **Standard-flat 360 x 30 x 21 mm**
14 – 35 W T 5, 18, 36, 58 W T 8
- + **Single- and double lamp drive in one ballast** – saves stock holding cost and increases availability
- + **Ex-certification with statement of conformity** – for easy luminaire certification and extra safety
- + **Service life of 100,000 h at ta = 60 °C**
economic: reduces replacement cost

Technische Daten

| | |
|----------------------|-------------------------------|
| Abmessungen: | 360 x 30 x 21 mm |
| Temperaturbereich: | -20 °C – 60 °C |
| Lebensdauer: | 100.000 h bei ta = 60 °C |
| Versorgungsspannung: | 220 V – 240 V, 0 / 50 – 60 Hz |
| Zertifikat: | ENEC, ATEX, IEC Ex, CE |

Technical Data

| | |
|--------------------|-------------------------------|
| Dimensions: | 360 x 30 x 21 mm |
| Temperature range: | -20 °C – 60 °C |
| Service life: | 100,000 h at ta = 60 °C |
| Voltage range: | 220 V – 240 V, 0 / 50 – 60 Hz |
| Certificate: | ENEC, ATEX, IEC Ex, CE |



Sie benötigen ein Muster oder eine besondere Ausführung ?

You need a sample or a different version, you have questions or ideas ?

Vorname, Name Prenom, name

Firma Company

Straße Street

PLZ/Ort CIP code

Land Country

Muster Best.-Nr.: Sample part.-no.:

Anruf call me

Hadler GmbH

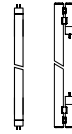
Fritzlärer Straße 19
34587 Felsberg-Neuenbrunslar
Tel.: +49 5662 9399-0
Fax: +49 5662 9399-29
E-Mail: info@hadler-gmbh.de

www.luxtronic.de




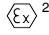
Mehr Informationen finden Sie unter:
www.luxtronic.de/Linear_VI

Luxtronic®



14 - 35 W
230 V

Technical data

| | |
|----------------------------------|---|
| Lamp type | T5 / SLS |
| Lamp start | Warm start, $t < 1.5$ s |
| Mains voltage range | 220 - 240 V, 0 / 50 - 60 Hz |
| AC voltage range | 198 to 264 V |
| DC voltage range ¹⁾ | 176 to 264 V |
| Ambient temperature range t_a | - 20 °C to 60 °C |
| Case temperature t_c | 75 °C |
| Temperature protection | 110 °C acc. EN 61347-1 C.6 e |
| RI supression | EN 55015 |
| Line harmonics | EN 61000-3-2 |
| Immunity | EN 61547 |
| Safety | EN 61347-1 and 2-3 |
| Function | EN 60929 |
| EOL Test circuit | acc. EN 61347-2-3 17.2 and .3 |
| Approval marks |   ²⁾ |
| Interface | n. a. |
| Control current | n. a. |
| Dimming range | n. a. |
| Emergency lighting acc. VDE 0108 | suitable |
| Wire cross-section | 0.5 to 1.5 mm ² |
| Order number | 3 P 135 18 0 |


Dimensions

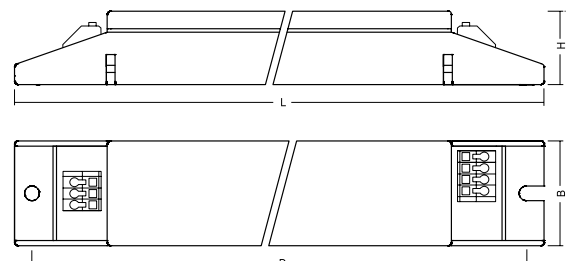
| | |
|---------------------------------|-----------------|
| Length x Width x Height | 360 x 30 x 21mm |
| Mounting holes distances D1, D2 | 350 mm |
| Weight | ca. 0.190 kg |
| Packaging unit | 20 pcs. |

Product features

Suitable for usage in ex-protected luminaires for zone 2
Automatic restart after lamp replacement

Remarks

- ¹⁾ Battery voltage may drop to 176 V
Starting voltage > 198 V
- ²⁾ Component approved acc. IEC 60079-15
 II 3 G Ex nA IIC Gc / TÜV 10 ATEX 555817 U
at t_a -20...+60 °C / t_c max. 75 °C



Technical data

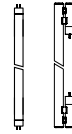
| Lamp power | Lamp type | EEI | at 230 V / 50 Hz | |
|------------|-----------|-----|------------------|-----------|
| | | | Current | λ |
| 1 x 14 W | T5 / SLS | | 0.08 A | |
| 1 x 21 W | T5 / SLS | | 0.11 A | |
| 1 x 28 W | T5 / SLS | | 0.14 A | |
| 1 x 35 W | T5 / SLS | | 0.17 A | 0.95 |
| | | | | |
| | | | | |
| | | | | |
| | | | | |
| | | | | |
| | | | | |
| | | | | |
| | | | | |

No. of ECG per circuit

| Typ | pcs. |
|-------------|------|
| B 10 (10 A) | 17 |
| C 10 (10 A) | 28 |
| B 16 (16 A) | 27 |
| C 16 (16 A) | 46 |


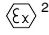
Expected lifetime

| Lamp power | Lamp type | ta | 40 °C | 50 °C | 55 °C | 60 °C | 65 °C | 70 °C | 75 °C | 80 °C |
|------------|-----------|----------|-------|-------|-------|----------|-------|-------|-------|-------|
| 1 x 35 W | T5 / SLS | tc | | | | 75 °C | | | | |
| | | Lifetime | | | | 50,000 h | | | | |
| | | | | | | | | | | |
| | | | | | | | | | | |
| | | | | | | | | | | |
| | | | | | | | | | | |
| | | | | | | | | | | |
| | | | | | | | | | | |
| | | | | | | | | | | |
| | | | | | | | | | | |
| | | | | | | | | | | |
| | | | | | | | | | | |
| | | | | | | | | | | |
| | | | | | | | | | | |
| | | | | | | | | | | |



14 - 35 W
230 V

Technical data

| | |
|----------------------------------|---|
| Lamp type | T5 / SLS |
| Lamp start | Warm start, $t < 1.5$ s |
| Mains voltage range | 220 - 240 V, 0 / 50 - 60 Hz |
| AC voltage range | 198 to 264 V |
| DC voltage range ¹⁾ | 176 to 264 V |
| Ambient temperature range t_a | - 20 °C to 60 °C |
| Case temperature t_c | 75 °C |
| Temperature protection | 110 °C acc. EN 61347-1 C.6 e |
| RI supression | EN 55015 |
| Line harmonics | EN 61000-3-2 |
| Immunity | EN 61547 |
| Safety | EN 61347-1 and 2-3 |
| Function | EN 60929 |
| EOL Test circuit | acc. EN 61347-2-3 17.2 and .3 |
| Approval marks |   ²⁾ |
| Interface | n. a. |
| Control current | n. a. |
| Dimming range | n. a. |
| Emergency lighting acc. VDE 0108 | suitable |
| Wire cross-section | 0.5 to 1.5 mm ² |
| Order number | 3 P 235 18 0 |


Dimensions

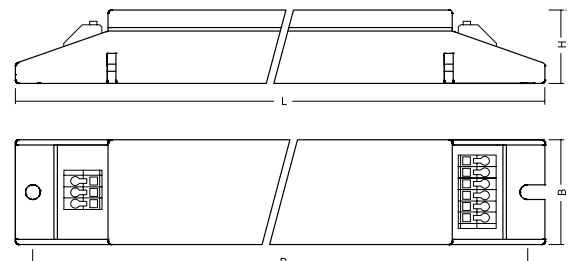
| | |
|---------------------------------|-----------------|
| Length x Width x Height | 360 x 30 x 21mm |
| Mounting holes distances D1, D2 | 350 mm |
| Weight | ca. 0.190 kg |
| Packaging unit | 20 pcs |

Product features

Suitable for usage in ex-protected luminaires for zone 2
Automatic restart after lamp replacement

Remarks

- ¹⁾ Battery voltage may drop to 176 V
Starting voltage > 198 V
- ²⁾ Component approved acc. IEC 60079-15
 II 3 G Ex nA IIC Gc / TÜV 10 ATEX 555817 U
at t_a -20...+60 °C / t_c max. 75 °C



Technical data

| Lamp power | Lamp type | EEI | at 230 V / 50 Hz | |
|------------|-----------|-----|------------------|-----------|
| | | | Current | λ |
| 2 x 14 W | T5 / SLS | | 0.13 A | |
| 2 x 21 W | T5 / SLS | | 0.20 A | |
| 2 x 28 W | T5 / SLS | | 0.26 A | |
| 2 x 35 W | T5 / SLS | | 0.33 A | 0.98 |
| | | | | |
| | | | | |
| | | | | |
| | | | | |
| | | | | |

No. of ECG per circuit


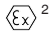
| Typ | pcs. |
|-------------|------|
| B 10 (10 A) | 8 |
| C 10 (10 A) | 13 |
| B 16 (16 A) | 13 |
| C 16 (16 A) | 22 |

Expected lifetime

| Lamp power | Lamp type | ta | 40 °C | 50 °C | 55 °C | 60 °C | 65 °C | 70 °C | 75 °C | 80 °C |
|------------|-----------|----------|-------|-------|-------|----------|-------|-------|-------|-------|
| 2 x 35 W | T5 / SLS | tc | | | | 75 °C | | | | |
| | | Lifetime | | | | 50,000 h | | | | |
| | | | | | | | | | | |
| | | | | | | | | | | |
| | | | | | | | | | | |
| | | | | | | | | | | |
| | | | | | | | | | | |
| | | | | | | | | | | |
| | | | | | | | | | | |
| | | | | | | | | | | |
| | | | | | | | | | | |



Technical data

| | |
|----------------------------------|---|
| Lamp type | T8 |
| Lamp start | Warm start, $t < 1$ s |
| Mains voltage range | 220 - 240 V, 0 / 50 - 60 Hz |
| AC voltage range | 198 to 264 V |
| DC voltage range ¹⁾ | 176 to 264 V |
| Ambient temperature range t_a | - 25 °C to 75 °C |
| Case temperature t_c | 80 °C |
| Temperature protection | 110 °C acc. EN 61347-1 C.5 e |
| RI supression | EN 55015 |
| Line harmonics | EN 61000-3-2 |
| Immunity | EN 61547 |
| Safety | EN 61347-1 and 2-3 |
| Function | EN 60929 |
| EOL Test circuit | acc. EN 61347-2-3 17.2 and .3 |
| Approval marks |   ²⁾ |
| Interface | n. a. |
| Control current | n. a. |
| Dimming range | n. a. |
| Emergency lighting acc. VDE 0108 | suitable, EBLF 100 % |
| Wire cross-section | 0.5 to 1.5 mm ² |
| Order number | 3 P 218 08 0 |


Dimensions

| | |
|---------------------------------|-----------------|
| Length x Width x Height | 360 x 30 x 21mm |
| Mounting holes distances D1, D2 | 350 mm |
| Weight | ca. 0.180 kg |
| Packaging unit | 72 pcs. |

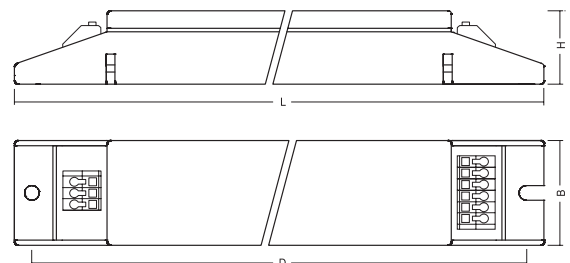
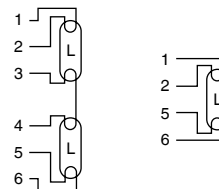
Product features

Suitable for usage in ex-protected luminaires for zone 2
Automatic restart after lamp replacement

Remarks

- Battery voltage may drop to 176 V
Starting voltage > 198 V
- Component approved acc. IEC 60079-15
 II 3 G Ex nA IIC Gc / TÜV 12 ATEX 105421 U
at t_a -25...+75 °C / t_c max. 80 °C

Terminal configuration



Technical data

| Lamp power | Lamp type | EEL | at 230 V / 50 Hz | | at 220 V / DC |
|------------|-----------|-------|------------------|-----------|---------------|
| | | | Current | λ | Current |
| 1 x 18 W | T8 | A2BAT | 0.09 A | 0.83 C | 0.08 A |
| 2 x 18 W | T8 | A2BAT | 0.16 A | 0.94 C | 0.16 A |
| | | | | | |
| | | | | | |
| | | | | | |
| | | | | | |
| | | | | | |
| | | | | | |
| | | | | | |
| | | | | | |


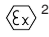
No. of ECG per circuit

| Typ | pcs. |
|-------------|------|
| B 10 (10 A) | 11 |
| C 10 (10 A) | 18 |
| B 16 (16 A) | 17 |
| C 16 (16 A) | 29 |

Expected lifetime

| Lamp power | Lamp type | ta | 40 °C | 50 °C | 55 °C | 60 °C | 65 °C | 70 °C | 75 °C | 80 °C |
|------------|-----------|----------|------------|------------|------------|------------|------------|----------|----------|-------|
| | | | tc | 45 °C | 55 °C | 60 °C | 65 °C | 70 °C | 75 °C | 80 °C |
| 1 x 18 W | T8 | Lifetime | >100,000 h | >100,000 h | >100,000 h | >100,000 h | >100,000 h | 88,000 h | 63,000 h | |
| | | tc | 50 °C | 55 °C | 60 °C | 65 °C | 70 °C | 75 °C | 80 °C | |
| 2 x 18 W | T8 | Lifetime | >100,000 h | >100,000 h | >100,000 h | >100,000 h | >100,000 h | 80,000 h | 58,000 h | |
| | | tc | 50 °C | 55 °C | 60 °C | 65 °C | 70 °C | 75 °C | 80 °C | |
| | | | | | | | | | | |
| | | | | | | | | | | |
| | | | | | | | | | | |
| | | | | | | | | | | |
| | | | | | | | | | | |
| | | | | | | | | | | |
| | | | | | | | | | | |
| | | | | | | | | | | |
| | | | | | | | | | | |
| | | | | | | | | | | |

Technical data

| | |
|----------------------------------|---|
| Lamp type | T8 |
| Lamp start | Warm start, $t < 1$ s |
| Mains voltage range | 220 - 240 V, 0 / 50 - 60 Hz |
| AC voltage range | 198 to 264 V |
| DC voltage range ¹⁾ | 176 to 264 V |
| Ambient temperature range t_a | - 25 °C to 70 °C |
| Case temperature t_c | 75 °C |
| Temperature protection | 110 °C acc. EN 61347-1 C.5 e |
| RI supression | EN 55015 |
| Line harmonics | EN 61000-3-2 |
| Immunity | EN 61547 |
| Safety | EN 61347-1 and 2-3 |
| Function | EN 60929 |
| EOL Test circuit | acc. EN 61347-2-3 17.2 and .3 |
| Approval marks |   ²⁾ |
| Interface | n. a. |
| Control current | n. a. |
| Dimming range | n. a. |
| Emergency lighting acc. VDE 0108 | suitable, EBLF 100 % |
| Wire cross-section | 0.5 to 1.5 mm ² |
| Order number | 3 P 236 08 0 |

Dimensions


| | |
|---------------------------------|-----------------|
| Length x Width x Height | 360 x 30 x 21mm |
| Mounting holes distances D1, D2 | 350 mm |
| Weight | ca. 0.180 kg |
| Packaging unit | 72 pcs. |

Product features

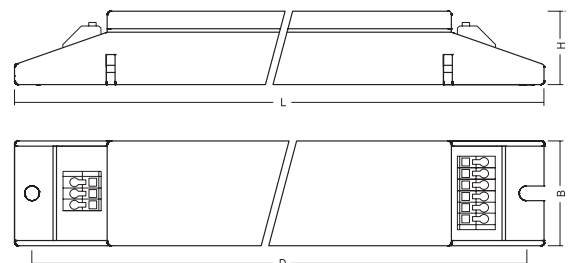
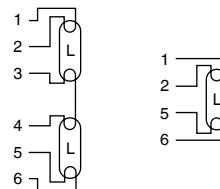
Suitable for usage in ex-protected luminaires for zone 2
Automatic restart after lamp replacement

Remarks


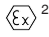
¹⁾ Battery voltage may drop to 176 V
Starting voltage > 198 V

²⁾ Component approved acc. IEC 60079-15
 II 3 G Ex nA IIC Gc / TÜV 12 ATEX 105421 U
at t_a -25...+70 °C / t_c max. 75 °C

Terminal configuration



Technical data

| | |
|----------------------------------|---|
| Lamp type | T8 |
| Lamp start | Warm start, $t < 1$ s |
| Mains voltage range | 220 - 240 V, 0 / 50 - 60 Hz |
| AC voltage range | 198 to 264 V |
| DC voltage range ¹⁾ | 176 to 264 V |
| Ambient temperature range t_a | - 25 °C to 65 °C |
| Case temperature t_c | 70 °C |
| Temperature protection | 110 °C acc. EN 61347-1 C.5 e |
| RI supression | EN 55015 |
| Line harmonics | EN 61000-3-2 |
| Immunity | EN 61547 |
| Safety | EN 61347-1 and 2-3 |
| Function | EN 60929 |
| EOL Test circuit | acc. EN 61347-2-3 17.2 and .3 |
| Approval marks |   ²⁾ |
| Interface | n. a. |
| Control current | n. a. |
| Dimming range | n. a. |
| Emergency lighting acc. VDE 0108 | suitable, EBLF 100 % |
| Wire cross-section | 0.5 to 1.5 mm ² |
| Order number | 3 P 258 08 0 |

Dimensions


| | |
|---------------------------------|-----------------|
| Length x Width x Height | 360 x 30 x 21mm |
| Mounting holes distances D1, D2 | 350 mm |
| Weight | ca. 0.180 kg |
| Packaging unit | 72 pcs. |

Product features

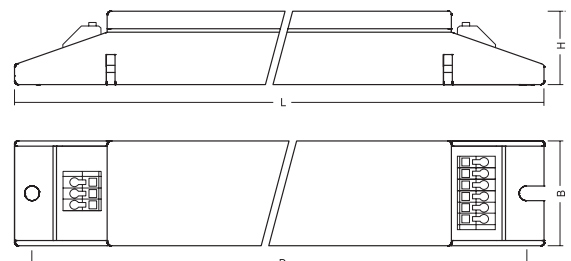
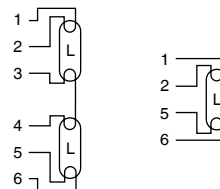
Suitable for usage in ex-protected luminaires for zone 2
Automatic restart after lamp replacement

Remarks

¹⁾ Battery voltage may drop to 176 V
Starting voltage > 198 V

²⁾ Component approved acc. IEC 60079-15
 II 3 G Ex nA IIC Gc / TÜV 12 ATEX 105421 U
at t_a -25...+65 °C / t_c max. 70 °C

Terminal configuration



Technical data

| Lamp power | Lamp type | EEL | at 230 V / 50 Hz | | at 220 V / DC |
|------------|-----------|-------|------------------|-----------|---------------|
| | | | Current | λ | Current |
| 1 x 58 W | T8 | A2BAT | 0.24 A | 0.98 | 0.25 A |
| 2 x 58 W | T8 | A2BAT | 0.44 A | 0.99 | 0.47 A |
| | | | | | |
| | | | | | |
| | | | | | |
| | | | | | |
| | | | | | |
| | | | | | |
| | | | | | |
| | | | | | |

No. of ECG per circuit

| Typ | pcs. |
|-------------|------|
| B 10 (10 A) | 8 |
| C 10 (10 A) | 13 |
| B 16 (16 A) | 13 |
| C 16 (16 A) | 22 |

Expected lifetime

| Lamp power | Lamp type | ta | 40 °C | 50 °C | 55 °C | 60 °C | 65 °C | 70 °C | 75 °C | 80 °C |
|------------|-----------|----------|------------|------------|------------|------------|------------|------------|------------|------------|
| | | | tc | 45 °C | 55 °C | 60 °C | 65 °C | 70 °C | | |
| 1 x 58 W | T8 | Lifetime | >100,000 h | >100,000 h | >100,000 h | >100,000 h | >100,000 h | >100,000 h | >100,000 h | >100,000 h |
| | | tc | 50 °C | 60 °C | 60 °C | 65 °C | 70 °C | | | |
| 2 x 58 W | T8 | Lifetime | >100,000 h | >100,000 h | 96,000 h | 89,000 h | 69,000 h | | | |
| | | tc | 50 °C | 60 °C | 60 °C | 65 °C | 70 °C | | | |
| | | | | | | | | | | |
| | | | | | | | | | | |
| | | | | | | | | | | |
| | | | | | | | | | | |
| | | | | | | | | | | |
| | | | | | | | | | | |
| | | | | | | | | | | |
| | | | | | | | | | | |
| | | | | | | | | | | |
| | | | | | | | | | | |
| | | | | | | | | | | |
| | | | | | | | | | | |