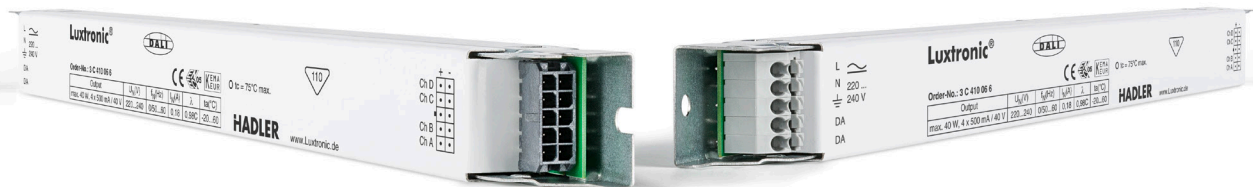


# HADLER



## Data sheet

Constant current LED control gear  
max. 40 W, 4 x 500 mA / 40 V, DALI DT8 Colour Control  
Intelligent temperature protection  
Suitable for usage in emergency lighting systems  
SELV output

Linear IV LED

**Luxtronic**<sup>®</sup>

## Linear IV LED control gear

More than 25 years of experience in the design and development of electronic lighting products, the close cooperation with test authorities and the joint research in the sector of explosion protection enable the company Hadler to develop products in accordance with market trends which will exactly meet the requirements. Function and, above all, safety will take priority over other requirements.

Furthermore, in accordance with the company philosophy, Luxtronic ballasts also reflect the "second idea": Features offering an additional benefit and using the full competence of the company Hadler to allow for a unique position in the market. Both large-scale and small-scale series of the Luxtronic ballasts can be produced in a cost-effective way. The proximity to the market allows for short delivery times.

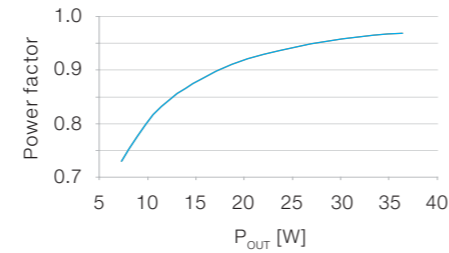
Michael Lamkowski  
Head of Research & Development



## Table of contents

**Input**

Rated supply voltage	220 – 240 V
Mains frequency	0 / 50 – 60 Hz
Input voltage range a.c.	198 – 264 V
Input voltage range d.c.	198 – 276 V
Rated supply current	0.21 A at full load
Power factor	0.97 at full load (see graph)
Total Harmonic Distortion	≈ 8 % at full load

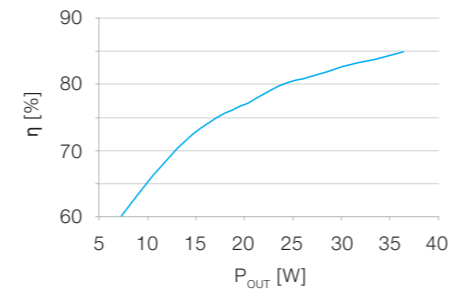


**Output**

Output characteristic	Constant current , SELV
Output voltage	4 – 38 V
Output current	0 – 500 mA, programmable
Output power	0 – 40 W
No. of output channels	1 – 4, programmable
Output current accuracy	+/- 5 %
Output current ripple	< 10 % at 100 Hz
Output dimming	AM / PWM programmable
Dimming range	1 – 100 %

**Efficiency**

Stand-By Power consumption	< 0.5 W
No-load Power consumption	< 0.6 W
Electrical efficiency	0.85 at full load (see graph)



**Interface**

Dimming Interface	DALI, Basic insulation
Interface control current	≤ 2 mA
Dimming curve	log. for colour type TC linear for colour type primary N

**Temperature, Lifetime**

Ambient temperature range (T <sub>a</sub> )	-20 – 60 °C		
Max. case temperature (T <sub>c</sub> )	75 °C		
T <sub>a</sub>	50 °C	55 °C	60 °C
T <sub>c</sub>	65 °C	70 °C	75 °C
lifetime	100,000 h	75,000 h	50,000 h

**Max. No. of ECG per circuit breaker**

Type	B10	13 pcs.
	C10	22 pcs.
	B16	21 pcs.
	C16	35 pcs.

**Wiring**

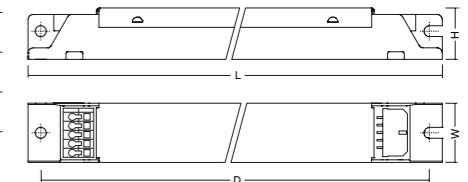
Max. output cable length	200 cm
Input wire cross-section	0.5 – 1.5 mm <sup>2</sup>
Output wire cross-section	0.2 – 0.5 mm <sup>2</sup>

The wiring should be short and without crossings for best EMC results.

**Dimensions**

Length x Width x Height	425 x 23 x 20 mm
Mounting hole distance D	415 mm
Mounting screws	M4 max.

(see schematic view on the right)



**Ordering data**

Weight	0.255 kg
Packaging unit	15 pcs.
Order No.	<b>3 C 410 06 6</b>

ECG 40 W, 4 x 500 mA / 40 V, 220 – 240 V, DALI

### Emergency lighting, performance during DC power supply

The electronic ballast shows same performance during DC power supply as in AC power supply.

### DALI properties

The DALI colour control functionality (part 209/Device Type 8) of this product has not been verified.

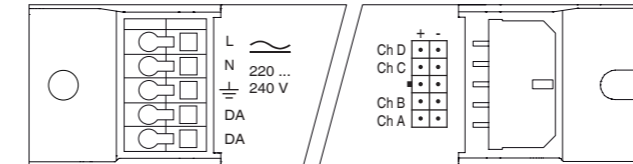
### Standards

- EN 61347-1
- EN 61347-2-13
- EN 62384
- EN 55015
- EN 61547
- EN 61000-3-2
- EN 61000-3-3

### Markings



### Wiring diagram





<http://www.hadler-gmbh.de/en/luxtronic/all-products/>

**Hadler GmbH**  
Fritzlärer Straße 19  
34587 Felsberg-Neuenbrunslar  
Tel.: +49 5662 9399-0  
Fax: +49 5662 9399-29  
E-Mail: [info@hadler-gmbh.de](mailto:info@hadler-gmbh.de)

**Luxtronic®**